



# Hire Safe Solutions Secures First TEN Sinoboom AB46RJ Superbooms in the UK & Ireland

16th April 2025

We're thrilled to announce a major addition to our growing fleet—Hire Safe Solutions has officially taken delivery of the *first 10 Sinoboom AB46RJ Superboom units* in the UK and Ireland. This €2 million-plus deal, made through Sinoboom's regional distributor, LOLEX Ltd, marks a significant investment in cutting-edge equipment to support complex high-reach projects across the region.

As a leading supplier of specialist powered access, we're continually investing in machines that push the boundaries of capability and reliability. The Sinoboom AB46RJ is no exception.



[Privacy](#) - [Terms](#)





The handover of the first unit took place at Sinoboom UK's new Derby facility, with LOLEX Managing Director Julie Houston Smyth welcoming the landmark delivery.

"We're delighted to have received this fantastic order from Hire Safe Solutions." she commented. "These Sinoboom Superbooms have such a super specification and backed by the technical service and support we provide, we expect them to perform extremely well in our region."

Our CEO, Gerard Jennings, added: "We are already well established in the industry as recognised 'super boom' specialists and the specification on these new Sinoboom units attracted us to invest. The quality and performance of the smaller Sinoboom units in our fleet has been great. We also like the people, we deal with both of Sinoboom's distributors – Lolex and Pinnacle – both of which provide us with great service and support."

This move strengthens our position as one of the leading providers of specialist and large-scale MEWPs across the UK, Ireland, and Europe.





*Julie Houston Smyth of Loxex with Gerard Jennings of Hire Safe Solutions*



## Sinoboom AB46RJ Key Specifications



**Working height: 48.6m**



- **Platform capacity:** 455kg (plus mode) / 275kg (unrestricted)
- **Turntable:** 360° continuous rotation
- **Jib rotation:** 150°
- **Power:** Stage V Deutz diesel engine
- **Drive system:** Four-wheel drive & steer
- **Basket:** Rotating basket for improved positioning
- **Up & Over Clearance:** 19m

Full specifications can be found here: [Sinoboom AB46RJ](#)

## Now Available to Hire

These game-changing Superbooms are now available for national hire from Hire Safe Solutions.

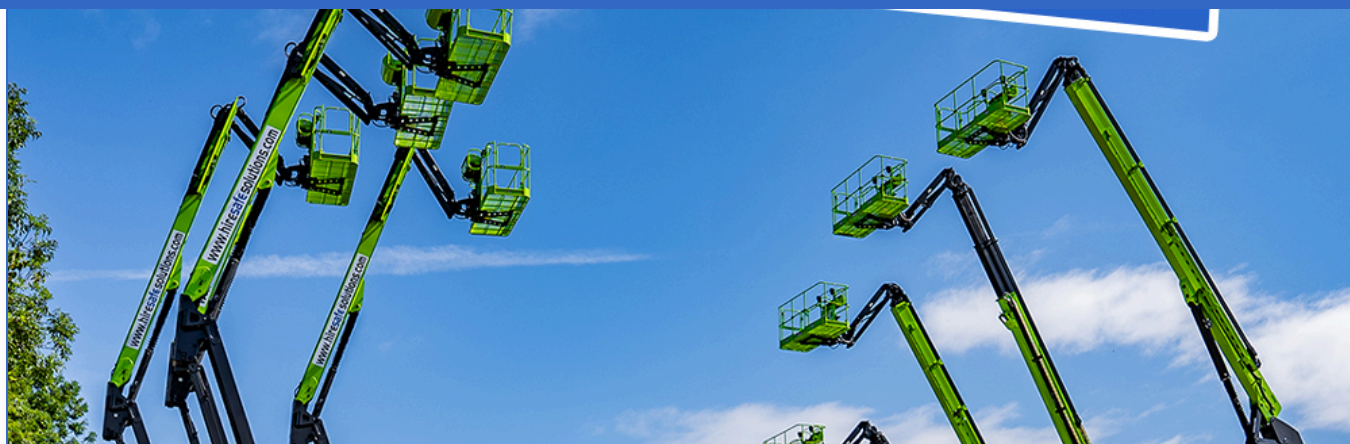
**Call us on 0800 865 4455** or send an email to **[info@hiresafesolutions.com](mailto:info@hiresafesolutions.com)** to get started.

---

[Return to News](#)







15/07/25

## €20M Zoomlion Investment Powers Major Fleet Expansion at Hire Safe Solutions

A new wave of specialist access equipment has started to roll into the Hire Safe Solutions fleet, marking the beginning of a €20 million investment into...

[READ MORE](#)

[VIEW MORE](#)





Birmingham  
Children's Hospital  
Charity

£10,000

Help us to reach our goal!

[VIEW MORE](#)

[Latest Articles](#)





When you're managing a busy construction site or

handling materials in a demanding industrial setting, the type of telehandler you choose can have a big impact on how efficiently...

[READ MORE](#)

22  
MAY



## 7 Benefits of Using a Spider Lift on Site

Choosing the right access equipment is vital when working in complex environments, as it helps to ensure safety, efficiency, productivity, and more. A spider lift is easily one of...

[READ MORE](#)

Genie.

SKY/JACK.

ERONTO SKYLIFT





[Knowledge HUB](#)

[Terms & Conditions  
of Hire](#)

[News](#)

[Contact Us](#)

Hire Safe Solutions Ltd,

Churchlands Business Park,  
Harbury,

Leamington Spa,  
CV33 9GX

Hire Safe Solutions Ltd,

Brindley Road,

Astmoor Industrial Estate,

Runcorn,

Cheshire, WA7 1PF

0800 865 4455

[info@hiresafesolutions.com](mailto:info@hiresafesolutions.com)

